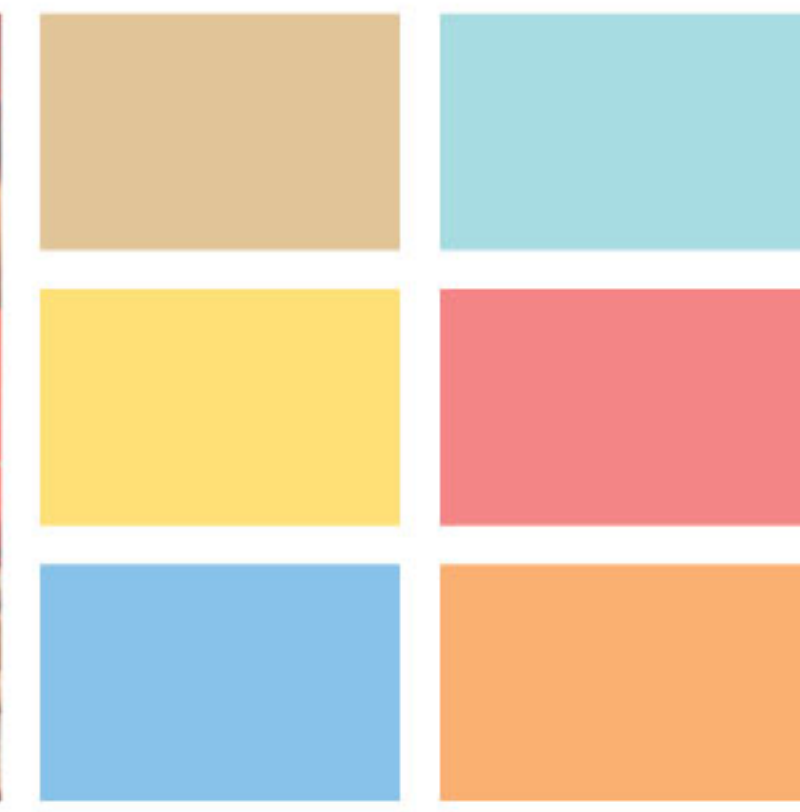
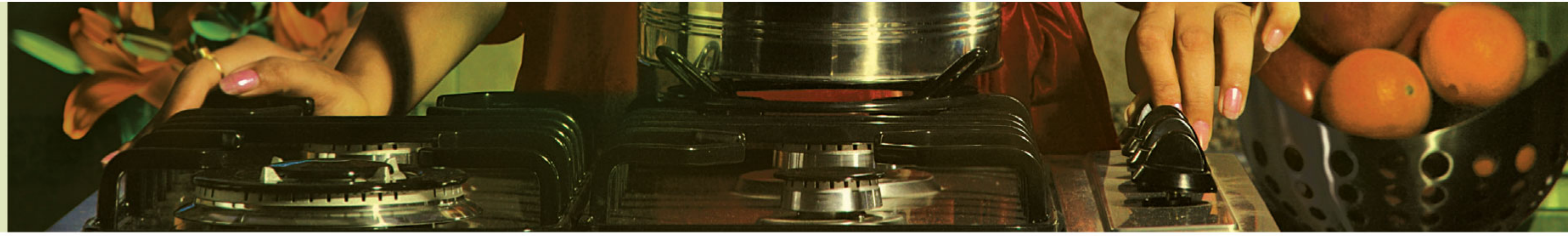


# Verve Update

October 2010



**unitech** VERVE  
GREATER NOIDA



Dear Customer,

Greetings!

We would like to bring you up-to-date with what's happening in and around your privileged Unitech property.



## CONSTRUCTION UPDATE



### MAIN ENTRANCE GATE

- Stone cladding work is complete.
- Final painting of canopy is in progress



### CLUB

- Structure is complete
- External plaster work is in progress



### SWIMMING POOL

- Structure and water proofing work are complete



### TOWERS 1 & 2

- External painting and plaster work are in progress



### TOWERS 3 & 4

- External plaster work is in progress



### TOWERS 5 & 6

- External painting work is in progress

## CONSTRUCTION MILESTONE TABLE

S.No.	PARTICULARS	Tower																	
		1			2			3			4			5			6		
		G+18			G+20			G+20			G+22			G+21			G+23		
A	STRUCTURAL COMPLETION	1	2	3	1	2	3	1	2	3	1	2	3	1	2	3	1	2	3
1	Structure	C	C	C	C	C	C	C	C	C	C	C	C	C	C	C	C	C	C
2	Completion of masonry work within flat	C	C	C	C	C	C	C	C	C	C	C	C	C	C	C	C	C	C
3	Completion of internal plaster within flat	C	C	C	19F	19F	19F	C	C	C	18F	17F	18F	C	C	C	C	C	C
4	Completion of plumbing work within flat	C	C	C	19F	19F	19F	C	C	C	20F	20F	20F	C	C	C	C	C	C
5	Aluminium work (Frames)	15 F	15 F	15 F	-	-	-	-	-	-	-	-	-	16 F	16 F	16 F	20 F	20 F	20 F
6	Aluminium work (Shutters)	W	W	W	-	-	-	-	-	-	-	-	-	W	W	W	W	W	W
7	Completion of electrical work within flat	W	W	W	W	W	W	W	W	W	W	W	W	W	W	W	W	W	W
8	Completion of flooring within flat	18F	16F	18F	19F	18F	19F	20F	18F	20F	17F	18F	19F	C	C	C	C	C	C

C: Complete, W: Work in progress

FOR MORE DETAILS ON THIS PROJECT, PLEASE CALL: 0124 - 4552103; 0120 - 3322339

## NEW LAUNCHES



**Nirvana Country 2**  
THE ART OF BETTER LIVING  
SECTOR - 71, GURGAON

- 3 to 5 bedroom villas
- Floor areas of 1523 - 5252 sq.ft.
- Neighbourhood shopping centres
- Landscaped surroundings
- Exclusive club house
- Metro connectivity

**uni Homes**  
SECTOR 117, NOIDA

- Part of 70 acres township
- 1, 2 & 3 bedroom apartments
- Sizes from 460 - 990 sq. ft.
- Gated community
- Power backup for utilities
- Gymnasium & swimming pool
- Sewage treatment plant
- Open kid's play area



**VISTAS**  
SECTOR - 70, GURGAON

- 3 bedroom apartments
- Sizes from 1530-1560 sq. ft.
- Extensive landscaped greens
- Club house
- Swimming pool
- 24X7 Power back-up

**UNI WORLD Gardens**  
SECTOR - 117, NOIDA

- 12 acres development
- Located near the FNG expressway
- 1, 2 & 3 bedroom apartments
- Sizes from 747 - 1408 sq.ft.
- Landscaped surroundings
- Swimming pool
- Exclusive club house
- Kid's play area



**THE GATEWAY**  
KONA EXPRESSWAY, KOLKATA

- Part of 34.78 acres campus
- 2 & 3 bedroom apartments
- Sizes from 977-1245 sq. ft.
- Swimming pool & gymnasium
- Landscaped gardens & modern clubhouse

**EXECUTIVE FLOORS**  
UNI WORLD CITY, MOHALI

- 3 bedroom independent floors
- Floor area of 1796 sq. ft.
- Part of 300 acres township
- Clubhouse and amenities
- Landscaped greens
- Swimming pool



For information on new launches  
E-mail: sales@unitechgroup.com Call: Gurgaon 0124 - 4552000, Noida 0120 - 3985100, Kolkata 033 - 22892000, Mohali 0172 - 4686200

[www.unitechgroup.com](http://www.unitechgroup.com)